
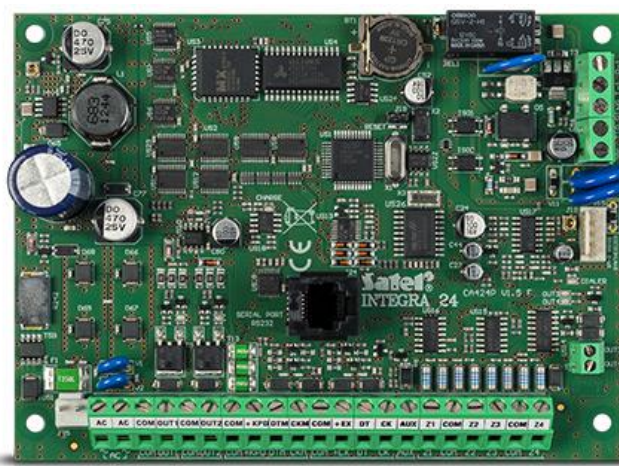


# INTEGRA 24

## ADVANCED CONTROL PANEL WITH 4 UP TO 24 ZONES

Advanced alarm control units providing alarm functions and optional implementation of home automation and access control systems. With a broad range of extension modules, their applications can be adapted to individual needs: from minor systems to extensive installations. Communication features combined with additional modules, such as GSM and TCP/IP, are a major advantage of the **INTEGRA** control units.

- 4 up to 24 zones
  - 4 partitions
  - 4 up to 20 programmable outputs
  - keypads and expansion modules buses
  - built-in telephone dialer with monitoring, voice messaging and remote control features
  - access control and home automation features
  - system operation with touchscreen keypads, LCD keypads, partition keypads, keyfobs and proximity cards or remotely with mobile phone or PC
  - 16 independent timers for automatic control
  - event log with 439 entries and event printing feature
  - 16+1+1 users
  - RS-232 port – RJ type socket
  - flash firmware upgrade with a PC
  - built-in 1.2 A switching mode backup power supply with battery charging and diagnostic features
  - option of not reporting possible problems with connecting to the SATEL server as a failure
- 



## TECHNICAL DATA

Protection class	S
Max. battery capacity	7 Ah
Control panels	13,8 V DC
Low current programmable outputs rating	50 mA
High current programmable outputs rating	2000 mA
Power supply rating	1,2 A
Board dimensions	142 x 106 mm
Operating temperature range	-10...+55 °C
Main board supply voltage (±15%)	18 V AC, 50-60 Hz
Standby mode current consumption	121 mA
Max. current consumption	204 mA



The actual appearance of the products may differ from the presented images. Product descriptions are provided in the web service for information purposes only.